

Draft Annual Distribution Plan

2025/2026 for Community Consultation





Our Trustees

From Left: Don Brash, Kate Barry-Piceno (Deputy Chairperson), Mark Arundel (Chairperson), Rachael Gemming, Greg Brownless, Peter Blackwell.

About our Draft Annual Distribution Plan 2025/2026

Each year TECT Community Trust prepare an Annual Plan describing the intentions with respect to distributions in the next Financial Year. TECT's financial year is 1 April - 31 March.

The Trustees are pleased to present the 2025-2026 draft annual distribution plan for community consultation.

About TECT

TECT is a community-focused trust providing support for local initiatives, facilities and events that bring vibrancy, connectedness, growth and economic benefits to our region.

Our purpose is to make a significant impact on shaping the quality of life and wellbeing of current and future generations in the Western Bay of Plenty.

We envision a thriving, caring and connected community where our governing six trustees will responsibly manage our investments and effectively distribute funds for the long-term benefit of our community.

TECT Trustees are elected by the community they serve and stand for a 4-year term. Every two years, three trustees retire and an election is held. The next election will be held in 2026.

How we work

Our funding approach is inclusive of all communities, and we prioritise support for those experiencing the highest need as well as enabling future transformational projects which benefit everyone in our community.



Our strategic focus areas



Housing Kāinga Āhuru

We believe everyone in our region should have access to warm, healthy, affordable and culturally appropriate housing.

To support this, we are focused on investing in initiatives that are community-led, and increase access to warm, healthy, affordable and culturally appropriate housing for communities experiencing the greatest barriers to secure housing.



Priority Communities Ngā Hāpori Mātua

We will provide support to the communities in our region experiencing highest needs.

Our focus is on achieving outcomes for Māori, diverse ethnic communities, children and young people, and older people experiencing disadvantage.

We will fund initiatives that increase access to opportunities for priority communities, support priority communities to lead their own solutions, are strengths-based and enable community ambitions; and incorporate cultural knowledge or other practices relevant to priority communities.



Natural Environment Toitū Te Taiao

We will invest in the protection and regeneration of our region's natural environment and biodiversity, and support initiatives that address the implications of climate change.

We will prioritise initiatives that achieve large scale transformational impact, bringing diverse stakeholders together and blending contemporary science with local knowledge, including mātauranga Māori, and are community-led and help to build community care of and connection with our environment.



Built Environment Whaitua Hononga

We will invest in local and regional amenities and facilities that support community connectedness, increase access to opportunities to participate in community activities and enhance the wellbeing and vibrancy of our communities.

We will actively work with Councils in our region to support the development of amenities and facilities, as well as funding community-led projects.



Community Wellbeing & Vibrancy Te Mauri me te Orangatanga

We want Tauranga and the Western Bay of Plenty to be vibrant places where people, families and communities thrive.

To support this, we will fund initiatives that promote social connection, inclusion and belonging, support whānau and community resilience, safety and wellbeing, enable participation in community activities, arts, culture, sports, recreation, build skills and provide opportunities for learning, and strengthen the impact and sustainability of community organisations.

Our funds

All grants will be made through five agreed funds as follows. This is to ensure that the Trust can provide reliable support to core community groups, projects and developments.

Responsive Funds



Community Facilities Fund

The Community Facilities Fund supports the development of facilities in the Tauranga and Western Bay of Plenty region that provide benefits for current and future generations.

Funding will generally be directed towards the build of a permanent new facility or a significant upgrade of an existing facility. It may also include the purchase of an existing facility.



Community Development Fund

The Community Development Fund supports projects and initiatives that contribute to Tauranga and Western Bay to be a vibrant region where people, families and communities thrive.

To support this, we will fund organisations that make a positive impact on our local communities across a range of sectors including arts, culture and heritage, education, environment, health and social services, youth development, iwi and marae, and sport and recreation.



Community Events Fund

The Community Events Fund aims to support community events held in the Tauranga or Western Bay of Plenty region that provide social and economic benefits to the community.

TECT wishes to support a wide and varied portfolio of events and encourage event organisers to achieve and maintain events of exceptional quality.

Strategic Funds (Invite Only)



Catalyst for Change Fund

The intention of the Catalyst for Change Fund is to create significant positive change through support of innovative projects and practices.

The need in the community will be identified through community consultation and research (e.g. Vital Signs).

A key aspect of this Fund is that TECT will be committed to continually building relationships with other key stakeholders (including other funders).



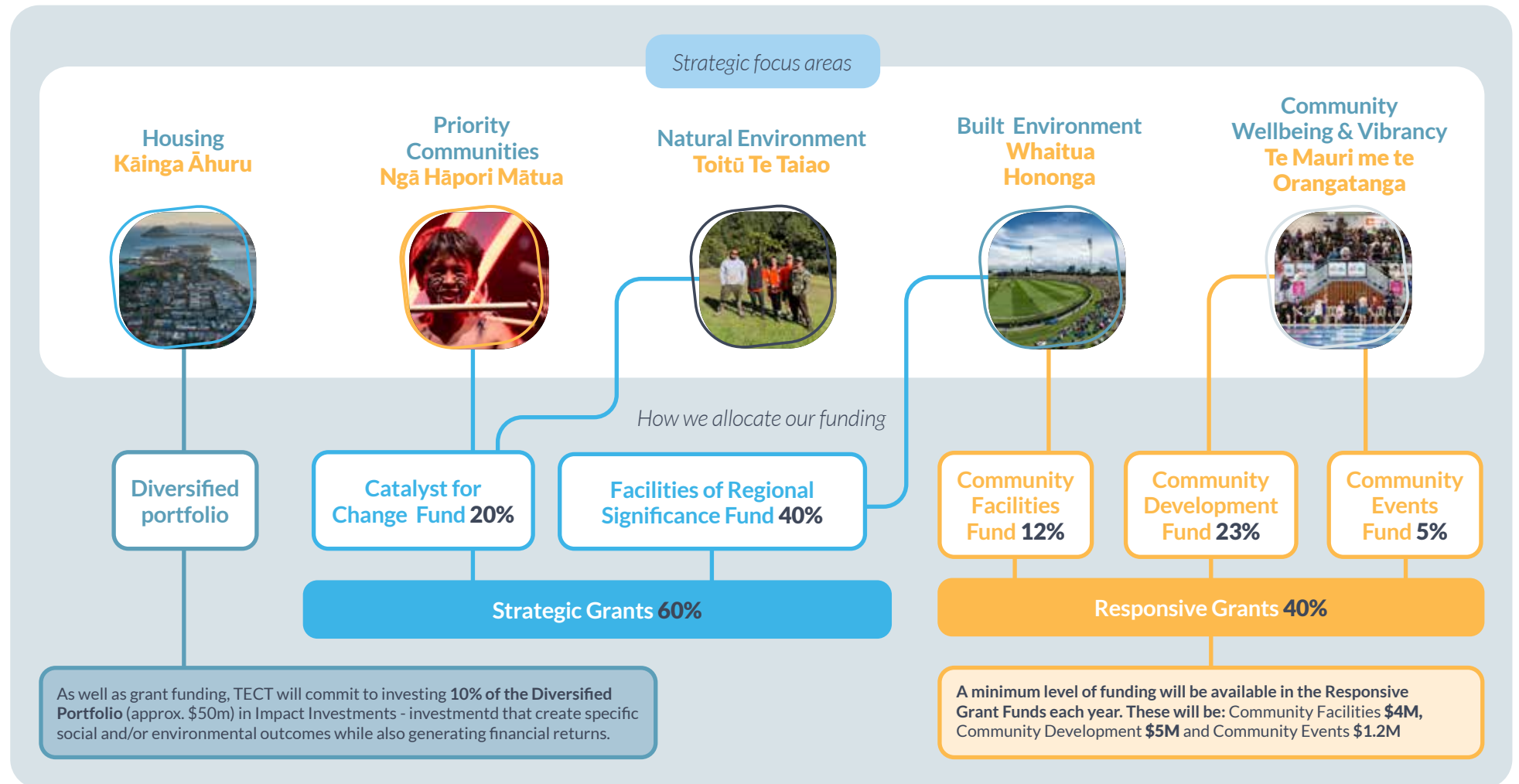
Facilities of Regional Significance Fund

TECT is interested in being a pro-active, collaborator in funding significant projects which will create a direct positive impact on the economic and social wellbeing of Tauranga and the Western Bay of Plenty region.

Projects may be significant in size/nature and will likely have intergenerational benefit, wide impact through improving social cohesion, enhancing community participation or are regionally significant.

Our funding framework

Our funding framework is used to guide allocations into the various funds.



Draft Distribution Plan

Proposed Plan

For the year ending 31 March 2026

Facilities of Regional Significance <i>(previous year \$7,543,947)</i>	\$6,530,000
Catalyst for Change <i>(previous year \$500,000)</i>	\$1,400,000
Community Facilities <i>(previous year \$2,421,820)</i>	\$4,000,000
Community Events <i>(previous year \$966,117)</i>	\$1,200,000
Community Development <i>(previous year \$4,961,201)</i>	\$5,000,000
Total Allocations <i>(previous year \$16,393,085)</i>	\$18,130,000

In the upcoming year, after the minimum levels have been implemented for the responsive funds, the Trustees have proposed that the majority of remaining funds are targeted at the Facilities of Regional Significance Fund. The funds carried across in the Catalyst for Change fund will ensure decisions can still be made out of this fund in the upcoming year.

Our Grants Programme

Each year, the TECT grants programme makes funding available to community organisations and initiatives. The proposed funds for 2024/2025 are as follows:

Responsive Funds



Community Facilities

Unused funds from last year	\$401,693
Allocated funds for this year	\$4,000,000
Total funds available	\$4,401,693



Community Events

Unused funds from last year	\$232,717
Allocated funds for this year	\$1,200,000
Total funds available	\$1,432,717



Community Development

Unused funds from last year	\$1,491,624
Allocated funds for this year	\$5,000,000
Total funds available	\$6,491,624

Strategic Funds (Invite only)



Facilities of Regional Significance

Unused funds from last year	\$5,549,691
Allocated funds for this year	\$6,530,000
Total funds available	\$12,079,691



Catalyst for Change

Unused funds from last year	\$2,934,908
Allocated funds for this year	\$1,400,000
Total funds available	\$4,334,908

Submissions are now open

Community members who wish to comment on the plan are invited to by using any of the contact methods below by 4:00pm Monday 24th March 2024. Please indicate if you would like to speak to your submission at a meeting of TECT Trustees on Thursday 3rd April 2024.

To make a submission

Visit www.tect.org.nz/submissions

Write to TECT, DX Box HP 40007, Tauranga

Email info@tect.org.nz

Please be aware that all submissions will be made available on the Trusts website for the public to view (contact details of submitters will be removed).